



May 2011

*Sutton  
Poyntz  
Biodiversity  
Group News*

2001-11. Ten year anniversary of the Dorset World Heritage Coast

## Four species of Blue butterfly on the wing



### DORSET FLORA GROUP

There will be a Biodiversity and Heritage display with the Waterworks Museum Open on Friday 3<sup>rd</sup> June from 10.00a.m. This is being organised by Robin Walls from Broadmayne this year. There will be a flower walk in the morning; Katherine Barker will give a presentation on landscape history and bring her County Boundary display, pond dipping and an afternoon walk with the ANOB Ridgeway team.

### Garden Bird Watch

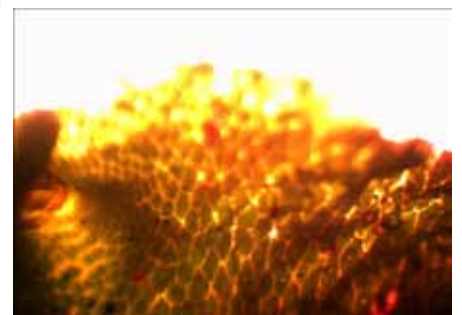
Twenty gardens have returned sheets for April. If you missed my deadline, I will be happy to receive late entries to complete the record. We succeeded in recording thirty-eight species with four gardens reporting Bullfinch and every garden reporting House Sparrow, which has never happened before. Grey Wagtail has been seen and the group is beginning to report breeding records including one on Plaisters Lane with breeding Kestrel. David Emery had **Garden Warbler** at Fox Cottage for two days, which has only rarely been recorded in previous years. One DNHAS member at a meeting last Saturday described the song of Garden Warbler as being like a Spanish newsreader with its fast vocal call unlike the more melodious Blackcap. House Martin is conspicuous by its absence, but a single passage Swift was noted on Puddledock Lane.



Holly Blue © Janet Craig

Over the past few weeks, butterflies have really been to the fore. There have been large numbers of Common Blue round the village, with smaller numbers of Adonis Blue on the chalk together with Small Blue. Holly Blue has been present in the village and adjacent to hedges.

Last autumn, we were successful in obtaining an **OPAL** grant to buy equipment including a microscope and digital camera. One use this has been put to is Liverwort identification. The microscope allowed me to differentiate two species of Snakewort see below.



Flora day programme available 25 May 2011

Wildlife Walks – Mondays from Fox Cottage near the Mission Hall at 9.30am. All welcome.

Newsletter – John Newbould who welcomes your notes and pictures 01305 837384

Email john\_newbould@btinternet.com

April 24-30th, 2011

	Wyndings	Valley Cottage	Spinneys	Springbank P L	Springbank P L	2 old Bincombe Lane	5 Old Bincombe Lane	7 Old Bincombe Lane	8 Old Bincombe	17 Old Bincombe	19 Old Bincombe	86 Sutton Rd	Northdown Farm	St Brivels	Mill Stream Cottage	Fox Cottage	The Cottage Puddled	2 The Puddledocks	3 The Puddledocks	Bellamy Cottage	66 Sutton Road	69 Sutton Road	79 Sutton Road	Camelot Sutton Rd	The Old Bakehouse	83a Sutton Road	Total No of gardens	Maximum	Minimum	Median		
Barn Owl	1			0																						1	2	1	0	1		
Blackbird	3		2	3		2	2	3	6	4	5	3	4	4	4	5	2	3		2	4	4				5	20	6	2	3.5		
Blackcap				0		1	2				1					1											4	2	0	1		
Black-headed Gull				0		1																					1	1	0	0.5		
Blue Tit	4		3	4					3	4	2	1	2	2		2	2	2		3	6	2				4	17	6	1	2		
Brambling				0																							0	0	0	0		
Bullfinch	2		2	0		2			1	2																	5	2	0	2		
Buzzard	1			0					1	1	1				1		2	1									7	2	0	1		
Carrion Crow	3			5		1	1	2	2		2				2			4		6	12	2	1			5	14	12	1	2		
Chaffinch	6		2	2		2		2	6		1		4	6		4	2	3			7	2				14	7	1	2.5			
Chiffchaff	1		1	1					2	1	1				2	1											8	2	1	1		
Coal Tit	1			4										2		2											4	4	1	2		
Collared Dove	5			0		2	1	3	5	2	2	2	2	2	2	2	1	2		2		2				4	17	5	0	2		
Common Pheasant	2			0					4																		2	4	0	2		
<b>Cuckoo</b>				0																							0	0	0	0		
Duncock	3		3	2		1		1	4	2	4	2	2	2	4	4		1								2	16	4	1	2		
Fieldfare				0																							0	0	0	0		
Goldcrest				0		1			1							1											3	1	0	1		
Goldfinch	5			1		2		2	8	1	2		6	4	1	2		2					1			13	8	1	2			
Great Tit	5		1	3			1	4	2	5	3	2	2	2	2	2	4	2									14	5	1	2		
Gr. Sp. Woodpecker	1			0														1									2	1	0	1		
Green Woodpecker				0				1					1														2	1	0	1		
Greenfinch	6		1	0		1		3	1	1	1		4	4									2			10	6	0	1			
Grey Wagtail				0		1		1																			2	1	0	1		
Grey Heron				0																							0	0	0	0		
Herring Gull				5			4		4		2	2	2		6		5			3	2	2				11	6	2	3			
House Martin				0																							0	0	0	0		
<b>House Sparrow</b>	30		2	4		3	6	6	12	6	6	5	8	6	12	30	5	6		4	6	6	2			6	21	30	2	6		
Jackdaw				6		2	2	3	4		4	2	4	4	5		3	6		2	4	5	2			16	6	2	4			
Kestrel			2	0					1														1				3	2	0	1		
Linnet				0																							0	0	0	0		
Long-tailed Tit				0							1						2	2									3	2	0	1.5		
Magpie	6		2	1		1	1	2	2	1	2	3	4	2	2	2	3	5		2	5	4				2	20	6	1	2		
Mallard			2	5																							3	5	2	3		
Mistle Thrush			1	0							1					1											3	1	0	1		
Moorhen				0											3												1	3	0	1.5		
Nuthatch				0																							0	0	0	0		
Pied Wagtail				2		1		1			1	1						1									7	2	1	1		
Redstart				0																							0	0	0	0		
Redwing				0																							0	0	0	0		
Robin	2		1	2		1	1	2	6	3	2	2	4	1	2	2	3	2		2	2	2	1			2	21	6	1	2		
Rook	3		1	8		3	4		10	2	7	7	6	5	6	4	5	3				5	6	2			18	10	1	5		
Siskin				0																							0	0	0	0		
<b>Song Thrush</b>				0							1																1	1	0	0.5		
Sparrowhawk				0														1									1	1	0	0.5		
<b>Starling</b>				0		3	2	1	6	1	1											2	2				8	6	0	2		
<b>Stonechat</b>				0																							0	0	0	0		
Swallow				0								2	4	1		1	3			2							6	4	0	2		
Swift				5																							2	5	1	3		
Tawny Owl	1			1																							2	1	1	1		
Treecreeper				0																							0	0	0	0		
Whitethroat				0																							0	0	0	0		
Willow Warbler				0																							0	0	0	0		
Wood Pigeon	11		3	3		2	3	4	7	2	3	2	4	4	2		3	2		2	6	3	3			19	11	2	3			
Wren				1			1			1			2														4	2	1	1		
<b>Yellowhammer</b>	6								8																		2	8	6	7		
##	0	29	0	0	0	33	30	41	##	31	59	39	65	49	58	68	42	51	0	30	61	54	11	0	0	31	37					
Counts	<b>37</b>																										No of re	<b>14</b>				
Total Records	##																															
Average	<b>38</b>																										Total no of gardens					

**SUTTON POYNTZ BIODIVERSITY GROUP**  
**Garden Wildlife Watch - Month 5 – 22<sup>nd</sup> - 28<sup>th</sup> May 2011**

**Name**

**Address**

**Post Code**

**Grid.Ref.**

<b>Date</b>	<b>Species</b>	<b>Number</b>	<b>Comment</b>
	Blackbird		
	Blackcap		
	Blue Tit		
	Brambling		
	Buzzard		
	Carrion Crow		
	Chaffinch		
	Chiffchaff		
	Coal Tit		
	Collared Dove		
	Common Pheasant		
	Duncock		
	Goldcrest		
	Goldfinch		
	Great Tit		
	Greater Spotted Woodpecker		
	Green Woodpecker		
	Greenfinch		
	Grey Wagtail		
	Grey Heron		
	Herring Gull		
	House Martin		
	House Sparrow		
	Jackdaw		
	Kestrel		
	Long-tailed Tit		
	Magpie		
	Mistle Thrush		
	Moorhen		
	Nuthatch		
	Pied Wagtail		
	Robin		
	Rook		
	Song Thrush		
	Sparrowhawk		
	Starling		
	Swallow		
	Swift		
	Treecreeper		
	Wood Pigeon		
	Wren		
	Yellowhammer		

Please return to 3 Brookmead Close, Sutton Poyntz, DT3 6RS after 29<sup>th</sup> May. Thank you  
 If you wish to email the information, I can send an electronic list. Please email me.

**Environmental Information Regulations:** Data are supplied on a voluntary basis and remain copyright of the originator. Sutton Poyntz Biodiversity Group transfers data to Dorset Environmental Records Centre to act as data custodian. Data may be analysed by computer and used for conservation purposes including sharing with other conservation organisations.